



**Black Hills Mining Museum** / 605.584.1605 / 323 W. Main St., Lead, SD 57754 / [blackhillsminingmuseum.com](http://blackhillsminingmuseum.com)

14 March 2022

Lawrence County Commission  
90 Sherman St.  
Deadwood, SD 57732

Lawrence County Commissioners:

As you know, the Black Hills Mining Museum is undertaking an exciting project to construct new facilities. In its quest for all available funds that could be used toward the completion of this project, the museum met recently with a loan specialist from the Rapid City office of the USDA's Rural Development. We learned that part of any application process for either grants or loans from them requires several elements. One that pertains to the Lawrence County Commission is that the Black Hills Mining Museum would need to provide evidence that its project to construct a new facility has significant community support. The USDA guidebook states the following:

There is a statutory requirement that all public bodies, Tribes, and nonprofit applicants provide evidence that the project has gained significant community support. As part of the application process, section 3811 of the Consolidated Farm and Rural Development Act (ConAct) requires evidence of significant public support in the form of a certification of support for each project or facility from any affected local government body.

Therefore, the Black Hills Mining Museum is requesting an official certification of the Lawrence County Commission's support for our project by resolution of the county commission.

While we are not sure at this point that we will pursue any options with the USDA Rural Development office, the certification resolution from the county will be a great help to us as we pursue other funding options as well.

Sincerely,

A handwritten signature in black ink, appearing to read "Gordon D. Phillips".

Gordon D. Phillips

New Facility Coordinator

(605) 580-5237 (cell)

[gordon.phillips@outlook.com](mailto:gordon.phillips@outlook.com)

Idea of what we would like

A RESOLUTION CERTIFYING THE COUNTY'S SUPPORT FOR THE BLACK HILLS MINING MUSEUM'S PROJECT

WHEREAS, the Black Hills Mining Museum has been an important fixture in Lawrence County for 36 years,  
and

WHEREAS, the museum is one of our community's trusted stewards of our historic items; and

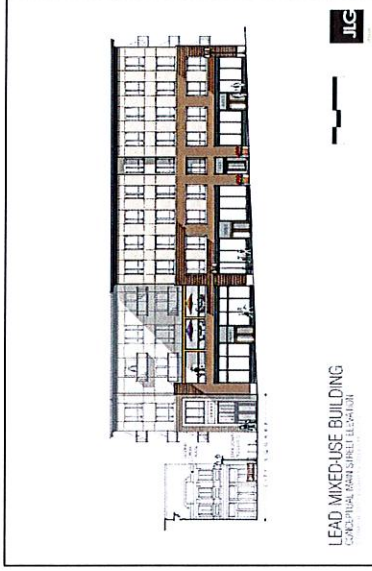
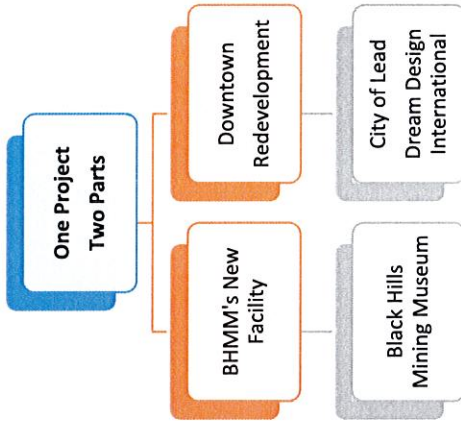
WHEREAS, the museum has demonstrated a real pressing need for a new facility, and

WHEREAS, the relocation of the museum will allow for significant redevelopment at its former location,  
and

WHEREAS, the Black Hills Mining Museum is the officially designated mining museum of the State of South  
Dakota,

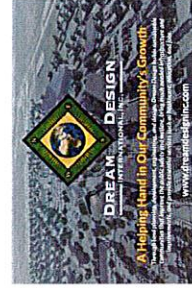
NOW, THEREFORE, BE IT RESOLVED, that the Lawrence County Commission certifies its support for the  
Black Hills Mining Museum's project to construct new facilities.

## PROJECT OVERVIEW



### BHMM's New Facility

- OUR PROJECT GOALS**
- Continue as a keystone attraction in Lead,
  - Be highly visible to highway traffic,
  - Dedicated and convenient parking including for bus and RV vehicles,
  - Be more ADA accessible,
  - Provide for the unique environmental requirements of a museum,
  - Increased space for archival collection and research,
  - Be able to tell our great stories even better,
  - Grow and enhance for a strong future.



### Downtown Redevelopment

#### THEIR PROJECT GOALS

- Urban infill after the Black Hills Mining Museum relocates,
- Continue and enhance the urban street character of Lead,
- Compliment the Opera House,
- Provide commercial space for Main Street businesses,
- Provide new/additional housing units,
- Connect Julius Street to Main Street,
- Enhance the plaza in front of the Opera House,
- Construct a new library, and
- Provide additional parking.