

# SIGN DETAIL FOR PEDESTRAIN PATHWAY CROSSINGS



SIGN FACING PATHWAY TRAFFIC  
PEDESTRIANS AND BICYCLISTS MUST STOP  
FOR TRAFFIC

## PATHWAY EASEMENT

SW1/4 NW1/4 SECTION 4, T6N, R2E, BHM  
SE1/4 NE1/4 SECTION 5, T6N, R2E, BHM  
LAWRENCE COUNTY, SD

Surveyed By: \_\_\_\_\_  
Date: \_\_\_\_\_

Drawn By: \_\_\_\_\_ RS  
Checked By: \_\_\_\_\_ RS

Location: \_\_\_\_\_  
\_\_\_\_\_  
\_\_\_\_\_

JUNE 2020

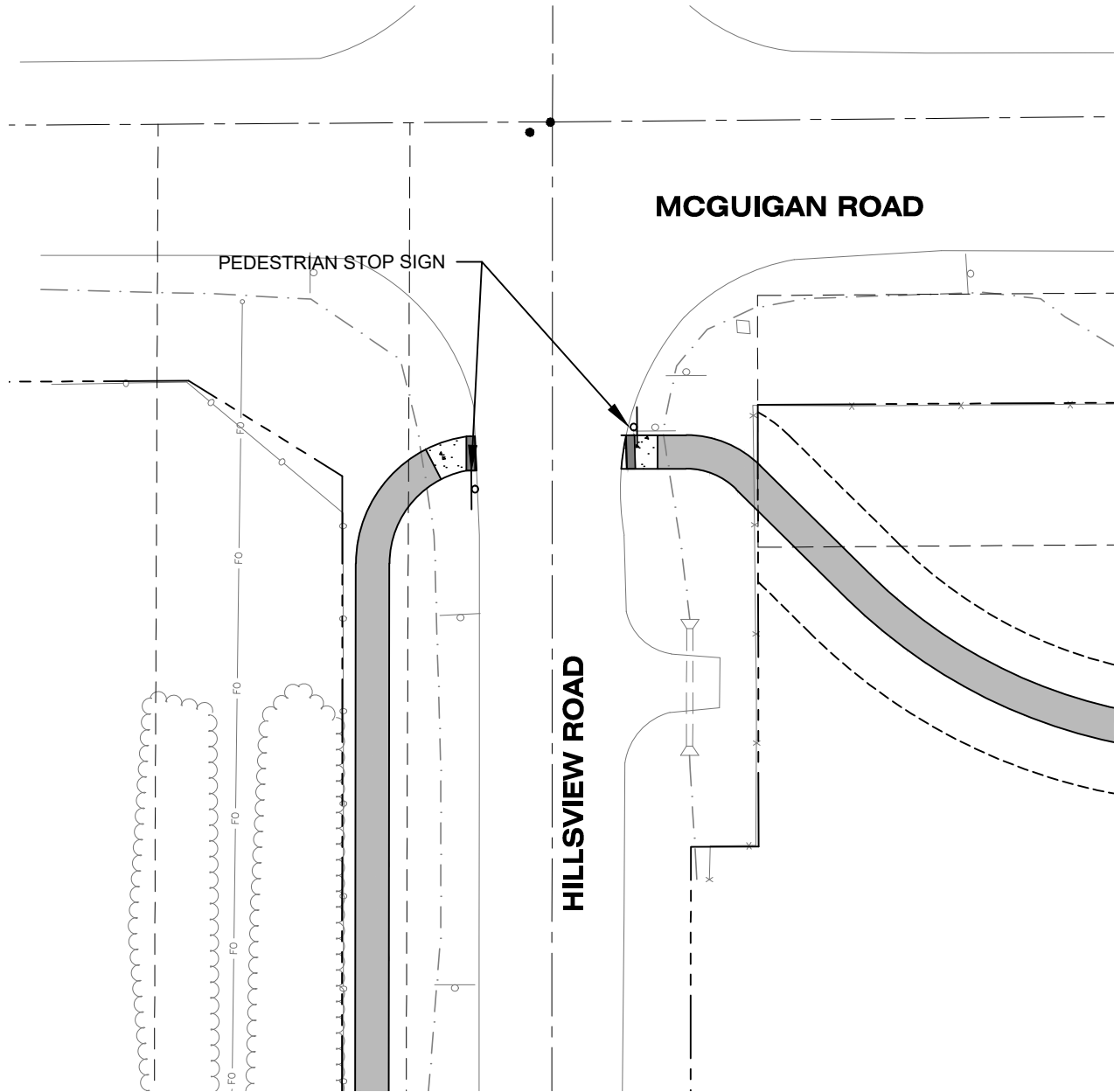
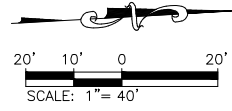


## FMG ENGINEERING

3700 Sturgis Road, Rapid City, SD 57702-0317  
fmgengineering.com  
(605) 342-4105

180668,01

# HILLSVIEW ROAD PEDESTRIAN SIGN LOCATIONS



Z:\180668.01\_Spearfish Exit 8 Area Community Path\CAD\Design Drawings\Site South.dwg, Hillsview Crossing Signing, 6/17/2020 2:28:13 PM, 12

**PATHWAY EASEMENT**  
 NW1/4 NW1/4 SECTION 9, T6N, R2E, BHM  
 AND SW1/4 SW1/4 SECTION 4, T6N, R2E, BHM  
 LAWRENCE COUNTY, SD

MAY 2020

Surveyed By: \_\_\_\_\_  
 Date: \_\_\_\_\_  
 Drawn By: KJS  
 Checked By: RAS  
 Location:  
 SW1/4 NW1/4 SECTION 4  
 T6N, R2E, BHM



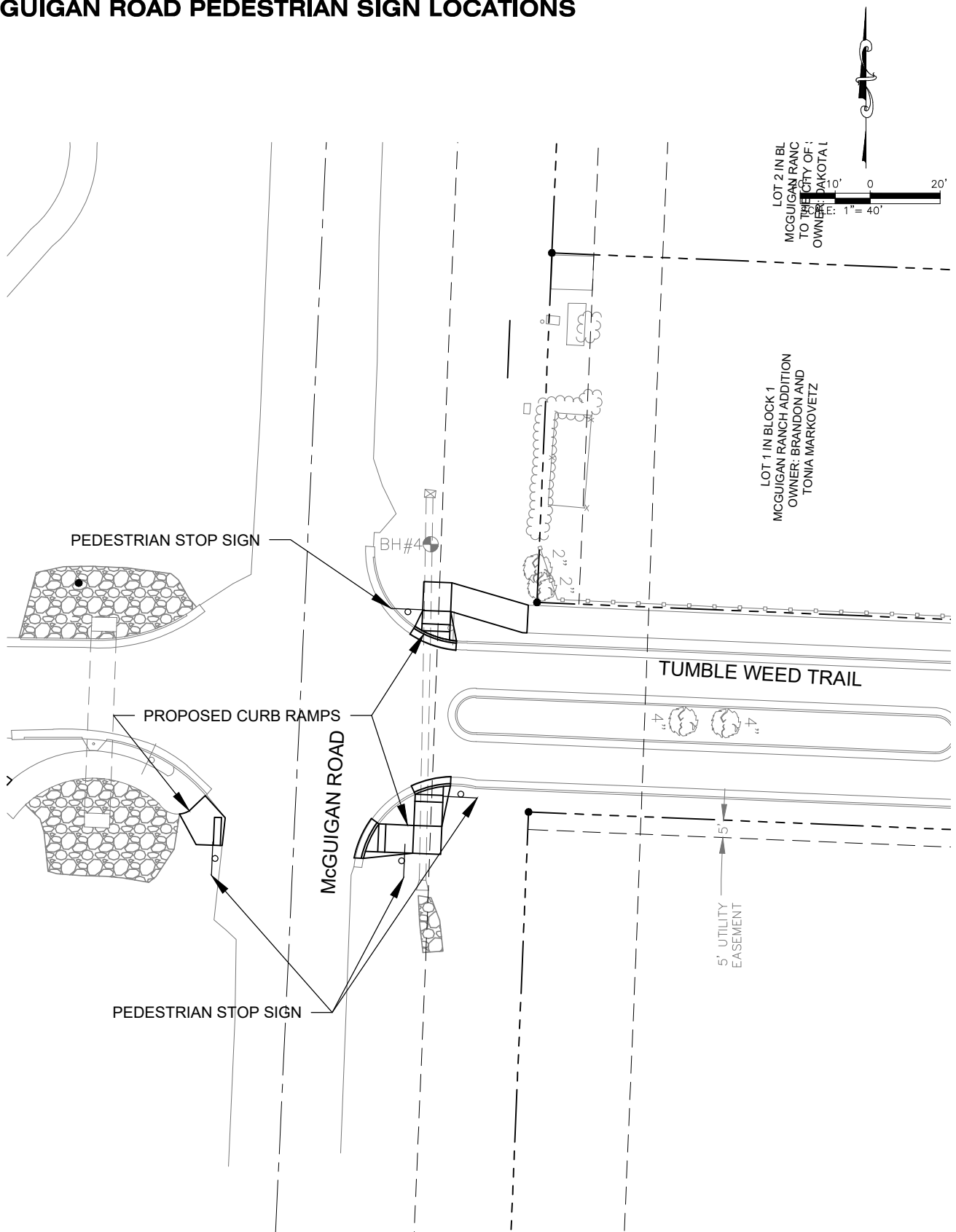
**FMG ENGINEERING**

3700 Sturgis Road, Rapid City, SD 57702-0317  
 fmgengineering.com  
 (605) 342-4105

Sheet Number: **1**  
 Total Sheets: **1**

180668.01

# MCGUIGAN ROAD PEDESTRIAN SIGN LOCATIONS



Z:\180668.01\_Spearfish Exit 8 Area Community Path\CAD\Design Drawings\Site South.dwg, McGuigan Crossing Signing, 6/17/2020 2:26:19 PM, 1:2

**PATHWAY EASEMENT**  
 SW1/4 NW1/4 SECTION 4, T6N, R2E, BHM  
 SE1/4 NE1/4 SECTION 5, T6N, R2E, BHM  
 LAWRENCE COUNTY, SD

MAY 2020

Surveyed By: \_\_\_\_\_  
 Date: \_\_\_\_\_  
 Drawn By: KJS  
 Checked By: RAS  
 Location:  
 SW1/4 NW1/4 SECTION 4  
 T6N, R2E, BHM



**FMG ENGINEERING**

3700 Sturgis Road, Rapid City, SD 57702-0317  
 fmgengineering.com  
 (605) 342-4105

Sheet Number: **1**  
 Total Sheets: **1**

180668.01