

LAWRENCE COUNTY APPLICATION FOR UTILITY PERMIT
PERMIT NO. _____

Highway No. 2-Bit Rd County Lawrence Approximately 2 Miles

From US 14A & Two Bit Rd to Brighter Day Pl for construction of Buried Fiber Optic cable
(City or well defined point) (Type of utility facility)

Begin Section 24 Township 5N Range 3E End Section 24 Township 5N Range 3E

Intended usage or rating placement of fiber optic cable

Cable size and Type 3/4"

Outside pipe diameter N/A

Maximum pipeline operating pressure N/A

Size and type of metal casing N/A

Minimum depth of cable or pipeline 48"

Method of Installation boring and plow

Approximate construction dates: START 6/15/2019 FINISH 8/01/2020

Special Conditions _____

I, the undersigned, request permission to construct and maintain a utility facility on public right-of-way at the above location and as shown on the attached layout sheet and in accordance with provisions of Administrative Rule Chapter 70:01:08 of the South Dakota Department of Transportation. In consideration for this permission, I agree to abide by all conditions as herein stated.

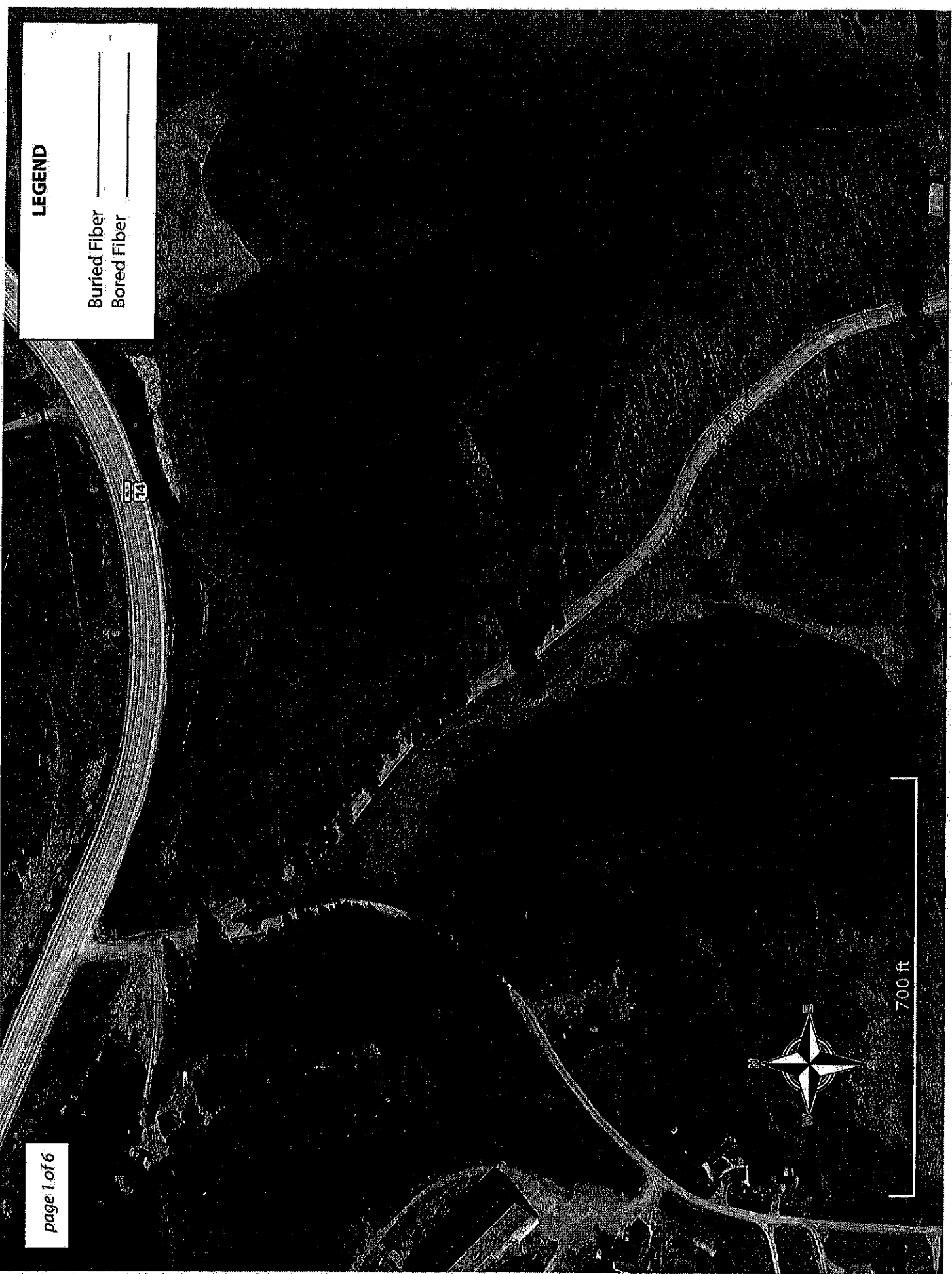
1. To furnish all materials, labor, incidentals and pay all costs involved with the construction and maintenance of the utility facility. To perform approved open cut trench operations in accordance with current Open Cut Trench Policy. To restore any damaged portions of the roadway and right-of-way to equal or better conditions than existed prior to beginning work covered by this permit
2. To provide protection to highway traffic during construction and maintenance by the use of proper signs, barricades, flag persons and lights as prescribed in the "Manual of Uniform Traffic Control Devices".
3. To furnish a performance bond if deemed necessary by the Lawrence County Commissioners.
4. In the event it is deemed necessary by the Lawrence County Commissioners to move or alter the line in any way due to maintenance or highway construction within its present right-of-way width, the alteration will be accomplished by the owner without cost to Lawrence County.

LEGEND

Buried Fiber _____

Bored Fiber _____

700 ft



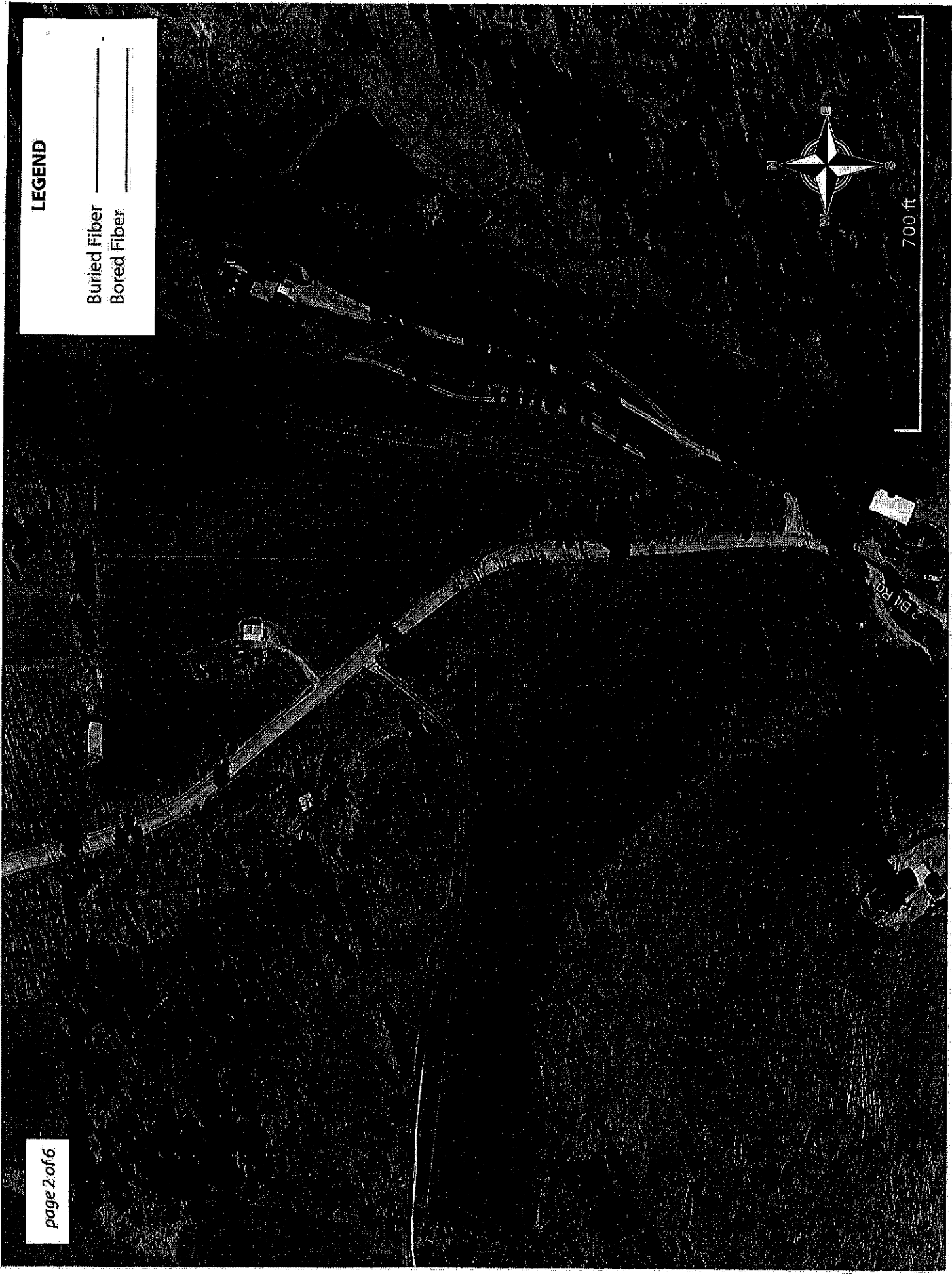
LEGEND

Buried Fiber

Bored Fiber



700 ft



Small vertical text on the right edge of the page, likely a page number or document identifier.

LEGEND

Buried Fiber

Bored Fiber

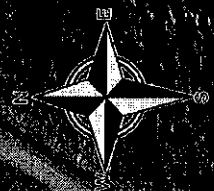


700 ft.

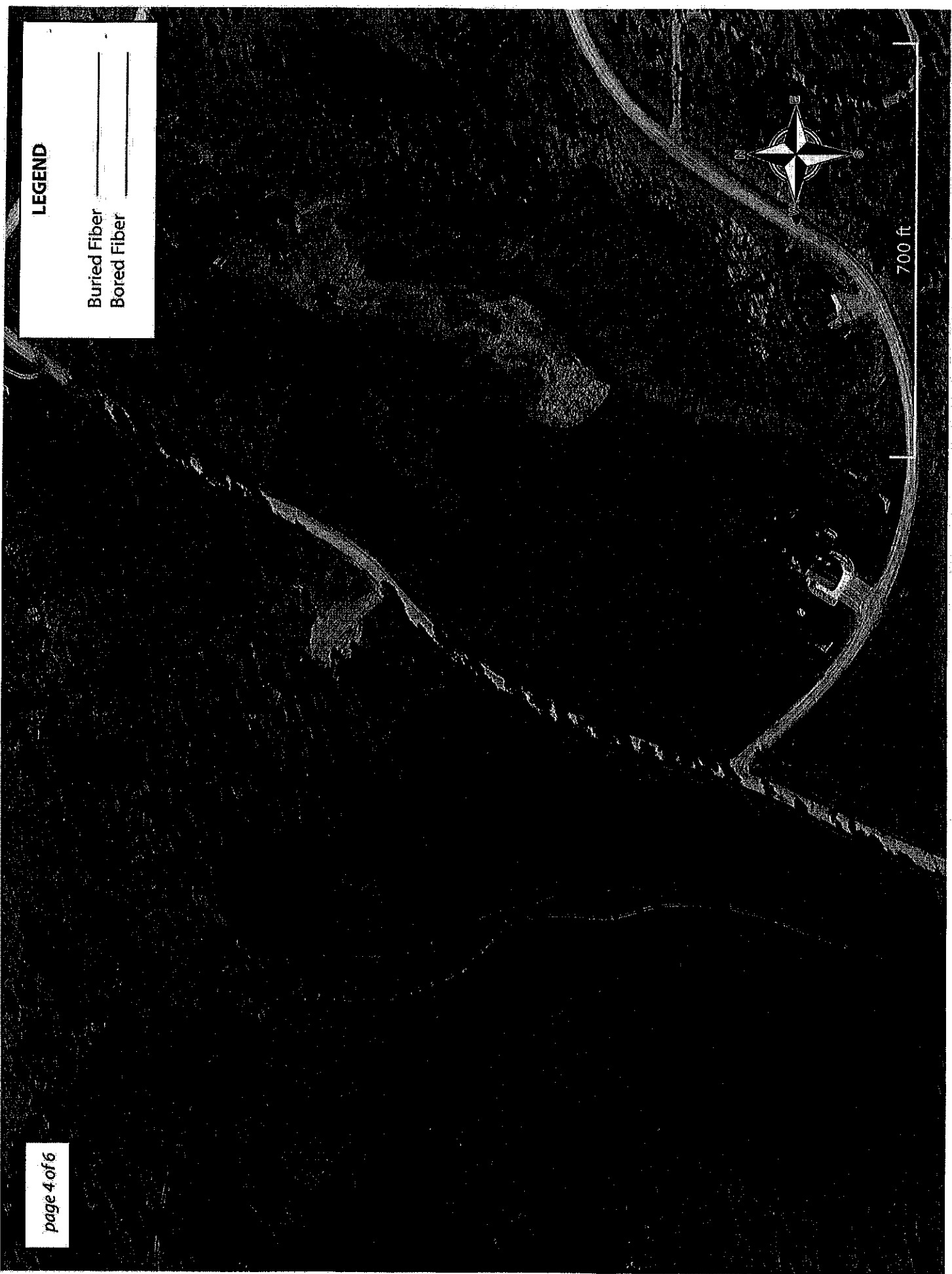
LEGEND

Buried Fiber

Bored Fiber

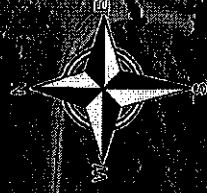


700 ft



LEGEND

- Buried Fiber
- Bored Fiber



700'ft

2 Bit P&T

LEGEND

Buried Fiber

Bored Fiber

